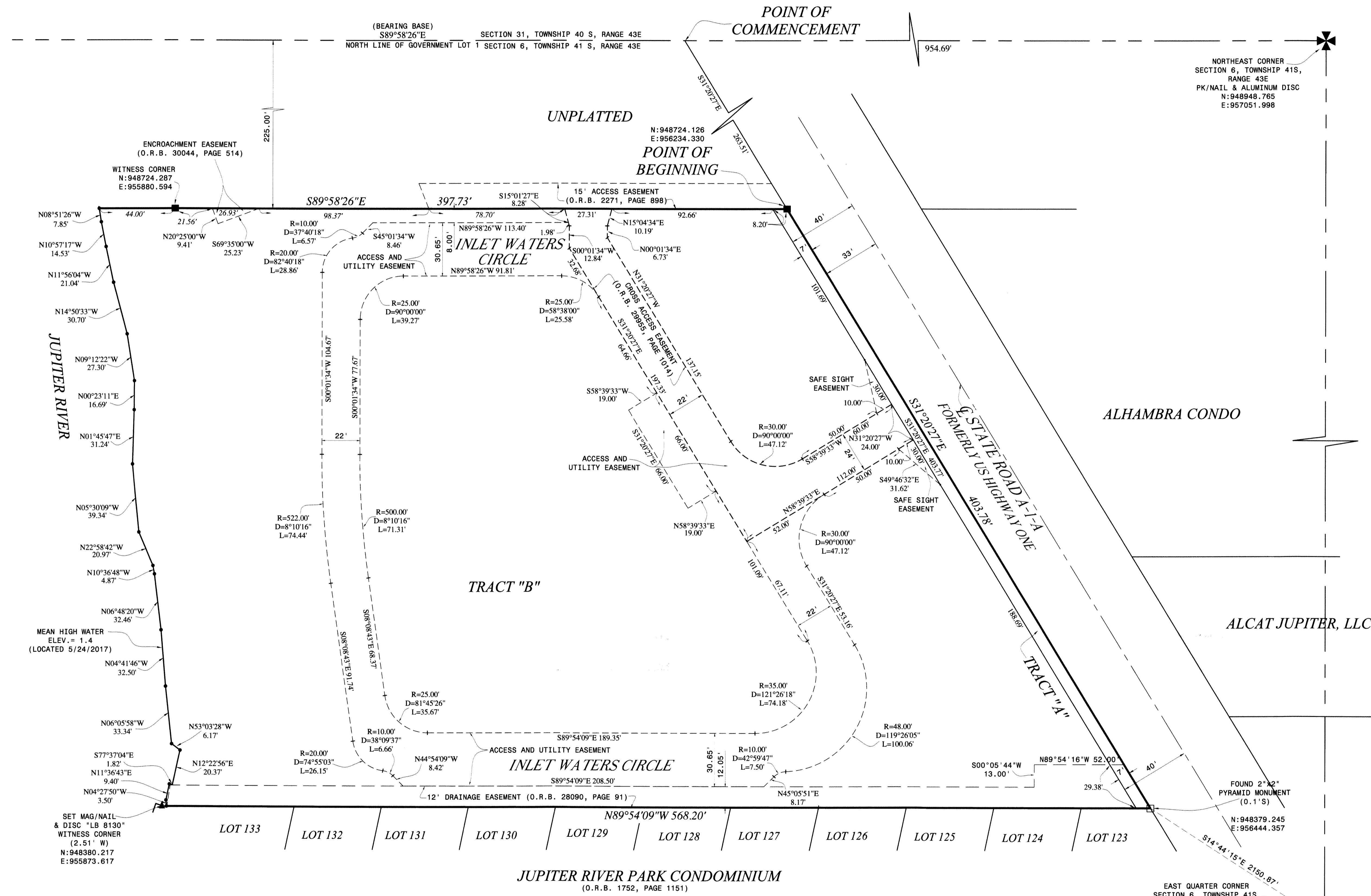


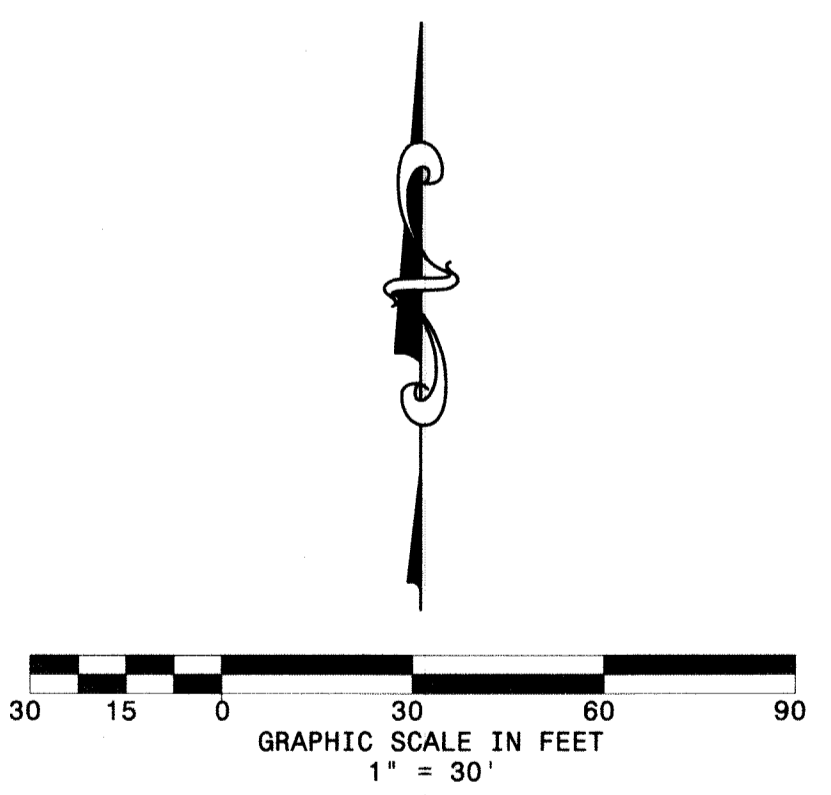
32

# INLET WATERS

LYING IN GOVERNMENT LOT 1,  
SECTION 6, TOWNSHIP 41 SOUTH, RANGE 43 EAST,  
TOWN OF JUPITER, PALM BEACH COUNTY, FLORIDA  
FEBRUARY 2019



- LEGEND**
- SET 4x4 CONCRETE (P.R.M.)
  - PERMANENT REFERENCE MONUMENT "LB 8130"
  - FOUND 2"x2" PYRAMID CONCRETE MONUMENT
  - ▲ SET MAG/NAIL & DISC "LB 8130"
  - ⊙ CENTERLINE
  - R RADIUS
  - D INTERIOR ANGLE
  - A ARC LENGTH
  - CHB CHORD BEARING
  - CHD CHORD DISTANCE
  - O.R.B. OFFICIAL RECORD BOOK



**SHEET 2 OF 2**  
**Legacy**  
 Surveying and Mapping, Inc.  
 112 N. U.S. Highway No. 1  
 Tequesta, FL 33469  
 Phone: (561) 748-8424  
 BUSINESS LICENSE: LB# 8130